

Central.



01

CENTRAL YORKE SCHOOL NEWSLETTER
FEBRUARY 3, 2023



Government of South Australia
Department for Education



RESILIENCE • RELATIONSHIPS • RESPECT

PRINCIPAL

Sharon Illingworth

DEPUTY PRINCIPAL

Finn Galindo

ASSISTANT PRINCIPAL

Chelsea Schmidt

HEAD OF CAMPUS: POINT PEARCE

Kath Magarey

HEAD OF CAMPUS: EARLY YEARS

Anna Allen

COORDINATOR OF MIDDLE SCHOOL

Lauren Schwerdt

COORDINATOR OF SENIOR SCHOOL

Shayla Graham

COORDINATOR OF INCLUSION FOR LEARNING

Amanda Wheeler

STUDENT SERVICES

Jess Morony • Debra Briggs

Tamara Braun • Sandra Gursansky

CONTACT US

Junction Road, Maitland SA 5573

P (08) 8832 2613

F (08) 8832 2336

E dl.0761.info@schools.sa.edu.au

ONLINE

W centrallyorkeschool.sa.edu.au

F facebook.com/CentralYorkeSchool

ACKNOWLEDGEMENT OF LAND

"We acknowledge the Narungga People as the Traditional Owners of this land and we pay our respects to their Elders past, present and emerging."



Sharon Illingworth

CYS Principal

Delivering a school culture of high expectations and achievement for all

On behalf of the school community, I would like to warmly welcome you to Central Yorke School in 2023. It was wonderful to see so many families coming back into the school for drop off on the first day. I know both myself and the staff appreciated seeing you and enjoyed the informal chat. Building community and family connections is a priority for CYS and we will continue to create opportunities to work together.

We extend a special welcome to all the new students and their families including the 20 new reception students. It is fantastic to see so many new enrolments of both siblings and new families.

FAREWELL TO MEL

At the end of 2022 Mel Richards decided she would not be returning in 2023. I would like to acknowledge her hard work and dedication in the ELC over several years.

Mel played a significant part in the amalgamation of Maitland Kindy with the Central Yorke School. Mel is passionate about providing children with the best education and this is reflected in all her work. We wish Mel well into the future. We welcome Anna Allen as the new Early Learning Centre Head of Campus in Term 1.

DAYMAP PARENT PORTAL

In Week 4 we will be launching our new Parent Portal, which delivers real time information about individual student's attendance, assessment tasks, homework, achievement and progress for parents/ caregivers.

Information and logins will be sent home in Week 3. If you have any concerns, we welcome you to raise them at the Meet the Teacher Night.

THE CYS LEADERSHIP TEAM

I am extremely proud to be leading the school in partnership with a dynamic leadership team. We have a new leadership

structure this year and already we are working collaboratively towards achieving our site improvement targets.

Our Executive Team comprises:

- Principal: Sharon Illingworth
- Deputy Principal Finn Galindo
- Assistant Principal: Chelsea Schmidt
- Head of Point Pearce: Kath Margarey
- Head of Early Years: Anna Allen

Our other CYS leaders are:

- Inclusion Coordinator: Amanda Wheeler
- Middle School Coordinator: Lauren Schwerdt
- Senior School Coordinator: Shayla Graham
- Wellbeing Leader: Brittany Koch
- Numeracy Leader: Luke Trenorden
- Literacy Leader Chloe Whittaker

NEW TEACHING STAFF

We would like to welcome the new teaching staff to our community:



- Amie-Lee Harris (Early Learning Centre/Primary Learning Hub)
- Michelle Cripps (Reception)
- Jemimah Lawrence (R/1)
- Lachlan Rennie (Year 4/5)
- Neve Smart (Year 6/7)
- Star Derrington (Year 4/5)
- Sherelle Rowe-Sims (Performing Arts)
- Monique Schulte (ACEO).

It is a privilege to be working with such an enthusiastic, committed staff who are dedicated to providing personalised high-quality teaching and learning. Visiting classrooms, I have seen inspiring spaces ready to deliver engaging learning programs and I am confident we will have a very successful academic year.

MEET THE TEACHER NIGHT

We will be holding our 'Meet the Teacher Night' for the CYS Maitland Campus on Tuesday 14 February at 5.30pm and for the CYS Point Pearce Campus on Wednesday 15 February at 4:30pm.

This is an opportunity for parents/ caregivers to meet the Leadership team, teachers and most importantly your child's Care Group teachers. Care Group teachers will be providing important information and work with families to support their children to be successful at school.

GOVERNING COUNCIL AGM

I would like to remind our community that the first Governing Council will be held on February 15 at 6:30pm. The Governing Council AGM will be held on 22 March at 6:30pm. Becoming a member of the Governing Council is a rewarding way to support the continual development of the school. If you are interested in becoming a

part of Governing Council please complete a nomination form and email it to Michelle Cross (tjmjcross@bigpond.com) by March 14.

Forms can also be collected from the front office. We welcome all parents/ caregivers to consider this opportunity and I look forward to working with you.

OUR SCHOOL'S CULTURE

This year we will continue to deliver a school culture of high expectations and achievement for all students. Our school values of Respect, Relationships and Resilience underpin our work and are reflected in everything we do.

I would like to take this opportunity to acknowledge the outstanding results achieved by our 2022 Year 12 students. Due to the dedication and commitment of students, teachers and families, our students achieved high academic results as well as gaining their first preference University offers and post school pathways. This sets our students up for bright futures.

NEW FACILITIES

Over the holidays there were several facilities and building upgrades. This has created new contemporary learning spaces as well as the infrastructure for advance technologies to be embedded across the school. I look forward to sharing the progress with you throughout the year.

Kind regards,



.....

Sharon.Illingworth714@schools.sa.edu.au



CYS 2022 SACE Results

100%

SACE
completion
rate

25%

A Band
subject
grades

42%

B Band
subject
grades

Merit

in
Agriculture
Productions

100%

Eligible ATAR
achievement

100%

C or better
subject
grades

96.2

Congratulations to Sophie Baker
who achieved a 96.2 ATAR score.

**CONGRATULATIONS TO
THE CLASS OF 2022!**





CYS SACE Results

Congratulations go to all our Year 12 students for their outstanding 2022 results

The Year 12's had 100% SACE achievement with 25% of our students in the A Subject Band, 42% of students in the B Subject Band, and 33% in the C Band.

Moreover, all eligible students achieved their ATAR with a significant 55% achieving an ATAR in the high 80's and above.

We also commend Sophie Baker for her Merit in 'Agriculture Productions' and for achieving an ATAR of 96.2.

97% of our students also received conditional offers to University before their ATARs were announced.

The results reflect the commitment and dedication of both students and staff and are competitive with the top performing schools in the state. Well done to all students and staff, we are very proud of you!



↑ Sophie achieved an ATAR of 96.2



↑ The 2022 Year 12 cohort and teaching staff.

CYS 2022 University Offers



Oscar Arthur
Flinders University
Bachelor of
Accounting



Sophie Heinrich
*University of South
Australia*
Bachelor of
Occupational Therapy
(Hons)



Sophie Baker
Flinders University
Bachelor of Nutrition
and Dietics



Tammie Rawlings
Flinders University
Bachelor of Nursing
(Pre-Reg)



Tayla Coles
*University of South
Australia*
Bachelor of Primary
Education (Hons)



Lachlan Vandeppeer
University of Adelaide
Bachelor of
Agricultural Sciences



McKenzie Dunlop
University of Adelaide
Bachelor of Arts
(Criminology)



Nicholas Thomas
*University of South
Australia*
Bachelor of Film
and Television



Georgia Hasting
*University of South
Australia*
Bachelor of
Physiotherapy (Hons)



Annabel Whittaker
Flinders University
Bachelor of
Health Sciences



Finn Galindo

Deputy Principal

Partnership and collaboration with families is a key priority and focus for 2023

I would like to thank students, families and staff for the warm welcome to the CYS community that I, and all new staff have received. This year brings some changes to Central Yorke School with the introduction of a middle school focus, leadership changes, new structures, modified spaces across the campus, and many new faces.

I am very excited to get to know and work with the school community in partnership to improve all students' learning and growth at school.

A SUPPORTIVE COMMUNITY

Having been teaching and leading at large metropolitan schools for several years the supportive community feeling of CYS is a real treat. Partnership and collaboration with families is a key priority and focus of mine for 2023 and I would welcome any conversation and opportunity to discuss your student's learning.

Across the campus there is a vibrant feeling of future focused thinking and some relief that we have had an uninterrupted start for the first time in a while, the whole school assembly on the first day back was a heart-warming experience with new students and many happy faces.

DIGITAL DESIGN AND ROBOTICS SPACE

Over the break we have been working on a Digital Design and Robotics space in the secondary wing which is soon to be open and already in use. This space enables project-based learning and the opportunity for students to further explore the digital world and careers available.

This year is shaping up to be an exciting one for the whole community. Please don't hesitate to get in touch with any questions, concerns or suggestions. My door is always open.

Looking forward to seeing you at our Week 3 'Meet the Teacher' evening.

Finn Galindo

.....
Finn.Galindo202@schools.sa.edu.au





Daymap is our online Learner Management System. Daymap replaces the school's older 'Sentral' data management system, 'Canvas' learner management system and 'Skoolbag' communication app.

Daymap will allow us to manage student data and wellbeing, attendance, communication, assessment and reporting, excursions, parent teacher interviews and curriculum all through the one app.

PARENT PORTAL

Daymap links to a parent portal app called "Daymap Connect".

We are currently scheduled to open the parent portal on Monday February 20. Account activation and sign in guide has been sent home with students but can also be found on our website and if you need support to access, please don't hesitate to call the school.

By utilising Daymap Connect you will have access to your child's timetable, course outline, assessment schedule, results, and feedback. We will be rolling out the excursion process through this application shortly which will enable you to complete and approve forms from your phone.

Many more feature are on the way and we are looking forward to this opportunity to open the door to your child's learning and achievement in the classroom

Connecting the School Community

TEACHER PORTAL



Daymap can become the one-stop shop for teachers. A place for teachers to complete a wide range of curriculum functions – course planning, academic reporting, assessment management and more.

Daymap also provides the tools to perform the day to day administration functions integral to a teacher's role with tools for managing and monitoring attendance, wellbeing and behaviour. The Teacher Portal can also be the hub for internal, student, and parent communication.

Less

STUDENT PORTAL



The Student Portal can become a student's lifeline – a source for all diary notes, lesson information and resources, assessment information (including upcoming tasks, results and feedback), school organisation and more.

Our touch and mobile friendly interface makes Daymap accessible on all devices, and our web-based platform allows students to access their Daymap wherever they are.

Less

PARENT PORTAL



The Daymap Parent Portal can be a central place for parents to follow their child's progress at school. Our live academic results and reporting abilities allow to monitor their child's achievement and progress.

With communication and event management tools it can also be the place for managing excursion consent forms, parent-teacher interviews and more. Plus, our Parent Portal offers branding options for schools to make their public platform their own.

1



First Day Back 2023

4



2



3



5



10



1. 6/7 class teacher
Neve Smart.

2. Families supporting
their children.

3. New receptions.

4. Year 1's testing the
new trucks

5. Student services
staff

6. 7/8's in the yard.

7. 6/7's in the
classroom

8. Year 11 at last!

9. Racing for the
classroom





Anna Allen

Head of Early Years

A wonderful week transitioning into the ELC learning space

Welcome to 2023 in the Early Learning Centre! My Name is Anna Allen and I have taken on the role as Head of Early Years in the ELC.

I would also like to welcome Amie-Lee Harris, who will be co-teaching with me along with Bianca Holdsworth who is continuing in the role as our kindergarten SSO with Maddi and Montana Briggs providing additional SSO support.

We have welcomed 25 new children and their families and have had a wonderful first week transitioning into the space. We are looking forward working with children and families this year to help support children's learning and development in the Early Years.

Anna Allen

.....

Anna.Allen814@schools.sa.edu.au

ELC Week 1 Photo Album





1. We finished the puzzle!

2. Painting fishes

3. Check out our sun-safe hats!

4. A visit from Mrs Illingworth

5. Story time

6. Making the skeleton puzzle

7. Ball games out on the grass





Kath Magarery

Head of Campus: Point Pearce

Families are the primary and most enduring focus for children's growth and learning

This year at the Point Pearce Campus we welcome two new staff members to our Early Years Team: Danni Redman and Bernie Roberts. Danni Redman is the Early Childhood Worker for our Occasional Care and Playgroup sessions with support from Bernie who is also supporting Cathy Redding in the preschool.

EARLY LEARNING CENTRE

We have a lot of exciting plans for the year ahead in both the R-2 classroom and our Early Learning Centre. While families and community have always been an integral part of our campus and are always welcome, this year we have joined the Learning Together Communities (LTC) Mentor Program.

The LTC Program provides support to playgroups on Department for Education sites incorporating an approach which acknowledges children learn and grow in the context of their families, who

are the primary and most enduring influences; focussing on everyday learning opportunities to promote early learning in literacy, numeracy, emotional wellbeing and dispositions for life-long learning.

WEDNESDAY MORNING CUPPAS

We invite any family members who have students at Central Yorke School (on any campus and regardless of their year level) who would like to connect with other families and community members to come and spend Wednesday mornings here at Point Pearce and have a cuppa and a chat.

We see this as a great way of engaging families in their children's learning and enabling them to have a voice in the education of their children here at Central Yorke School in a relaxed and informal setting.

Kath Magarery

.....

Kath.Magarery602@schools.sa.edu.au





BERRY STREET EDUCATION MODEL

Curriculum and Classroom Strategies

My role has expanded this year to support staff and students across all three campuses in implementing our Student Wellbeing Strategy – The Berry Street Education Model. Staff undertook 4 days of Professional Development in this model in 2022.

WHAT IS THE BERRY STREET MODEL?

The Berry Street Education Model supports educators to help students meet their own learning needs by:

- understanding the benefits of a positive education approach on child development and ability to learn
- creating a supportive and positive education classroom
- bolstering student-teacher relationships
- applying positive relational classroom behaviour management strategies
- instilling strengths-based practices across the school.

WHAT ARE WE DOING AS A SCHOOL?

Staff across the campuses are implementing some great strategies to support their students including Welcome Circles every morning, Brain Breaks throughout the day, incorporating Mindfulness Strategies, Positive Primers and both class and individual Ready to Learn Plans. If anyone would like further information on the Berry

Street Education model please feel free to come and see me or talk to your child's teacher. We welcome your questions, value your thoughts and prioritise family input into the best ways to support your child at school.

ABORIGINAL PERSPECTIVES

In partnership with our Aboriginal Community Engagement Officers Kay Lawrence, Monique Schulte and Charlotte Bucksin I am also supporting teachers across all 3 campuses to embed Aboriginal Perspectives across the curriculum as part of the Department for Education's Aboriginal Education Strategy.

Teachers will include Aboriginal perspectives in classrooms to ensure all students can see themselves in the curriculum. To increase confidence, participation and success of students it is important for learners to find a sense of place and belonging within the school and I am excited to see what our amazing staff and students will do.

By working together as a staff, a school and a community I believe we can achieve the Department for Education's vision that each Aboriginal child and young person is a proud and confident learner, achieving at their highest potential.

Website: berrystreet.org.au
Services: foster care, trauma care, parenting and family, education
Email : info@berrystreet.org.au



Chelsea Schmidt

Assistant Principal | Primary

Our extended transition program set our newest Primary members up for success

The Primary corridor has been a buzz this week. It has been great to see everyone transition back into learning with high levels of enthusiasm.

Our staff have taken great pride in setting up inspiring spaces for our students and the look on their faces as they entered each classroom said it all!

RECEPTION TRANSITION

Our new receptions transitioned with ease and it was great to see our Year One students helping our newest Primary members to settle into the routines of school life.

Having the opportunity to be a part of our extended school transition program last year certainly helped to set our newest Primary members up for success.

NEW & RETURNING STAFF

We have a number of new and returning staff across our Primary school this year.

Michelle Cripps has taken on a classroom role three days a week with our Reception class alongside **Sarah Atkins** as well as teaching Dance across the Primary.

Emma Westbrook has returned from maternity leave and is sharing our R/1 class with **Jemimah Lawrence** who is a new face to our JP team.

Chloe Whittaker and **Chelsey Arthur** will be team teaching our Year 2/3 class and **Star Derrington** has returned to teach our 4/5A class. In our 4/5B class we have **Lachlan Rennie** who has taken on his new role with great enthusiasm.

We also feel very fortunate to have **Monique Schulte** working as an ACEO in the early years. Monique will also be teaching our students to learn Narungga language later in the term.

Overall it has been a great start to what I know will be a great year and I look forward to sharing all of the amazing learning with families and the wider community.

Chelsea Schmidt

.....

Chelsea.Koch517@schools.sa.edu.au



Amanda Wheeler

Coordinator: Inclusion for Learning

The One Plan... contains information to support a young person’s inclusion and achievement at school

As a parent or carer, you play an important role in supporting the educational outcomes of your child or young person in your care. One of the tools that can support a student with a disability, a child or young person in care, Aboriginal children and young people’s education is the One Plan.

WHAT IS THE ONE PLAN?

The One Plan is a personalised learning plan that contains information to support a child or young person’s inclusion and achievement in preschool and school.

WHAT ARE THE BENEFITS OF THE ONE PLAN?

For your child:

- Personalises goals and adjustments to the curriculum, the environment, or teaching instruction.
- Provides an opportunity for them to voice, share and record their interests, strengths, motivations, and aspirations
- Supports transition of information to other preschools/schools through the timely transfer of the learning plan
- Provides information about progress

For you as the parent(s)/carer/guardian:

- It includes your voice about your child’s learning, their strengths, interests, motivations and aspirations
- It supports effective communication
- Documents agreed actions
- Supports and documents your child’s ongoing learning journey

WHAT IS MY ROLE AS A PARENT, CARER OR GUARDIAN?

As the care provider your input into the plan for your child is invaluable as no one knows your child better than you.

Your role is to:

- Complete the parent perspective template and return it to school. This will be sent home with all students who require a One Plan in Week 2.
- Attend planning and review meetings
- Attend parent-teacher meetings which provide an opportunity to talk about progress
- Provide any outside service providers reports and/or share information with the school or preschool that is important.

HOW OFTEN IS THE ONE PLAN UPDATED?

Students learning and achievement is monitored and reviewed throughout the year. The One Plan is a working document updated as your child develops in their learning or if additional information is received, and adjustments to the curriculum, the environment or teaching instruction is made.

For additional information please contact your class teacher or myself.

Amanda Wheeler

.....

Amanda.Wheeler904@schools.sa.edu.au



Maxine Carden



Paige Ekers



Alexander Gatti



RECEPTIONS & YEAR 1 FIRST DAY OF SCHOOL, 2023

- Front Row:** Jaelyn Smith, Tamika Lloyd, Kolby Liebhardt, Azariah Wanganeen, Gwen Moloney, Delilah Kerr.
Middle Row: Iris Sansbury, Lucas Brooks, Paige Ekers, Alyssa Clarke, Alexander Gatti, Amarli Power, Adelyn Brook.
Back Row: Mrs Cripps, Mrs Illingworth (Principal), Montana Wilson, Xavier Hasting, Connor Ekers, Jake Adams, James Barker, Evie Moir, Archer Errington, Ashton Webb, Haidyn Bray, Bodhi Milkins, Maxine Carden, Japji Kaur, Miss Atkins.



Azariah Wanganeen



Jaelyn Smith



Demi Bagshaw



Blaze Rogers



Alvssa Clarke



Tamika Llovd



Gwen Moloney



Deliah Kerr



Haidyn Bray



Xavier Hasting



Adelyn Bennett



Amarli Power



Lucas Brooks



Kolby Liebhardt



Iris Sansbury



1

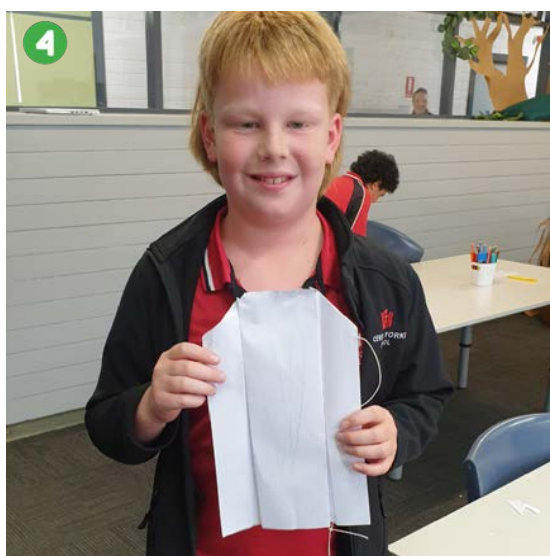
Primary Week 1 Photo Album



2



3



4



1. 2/3 Library Lesson

2. 2/3 STEM - making our names in wire

3. Week 1 Merit Card winners

4. 4/5 STEM - kites

5. 4/5 Maths.

6. 4/5 Music - the djembe drums.

7. First day okay? Thumbs up!

8. R/1 teacher - Jemimah Lawrence

9. 4/5 teacher - Lachlan Rennie.

10. Learning Hub & ELC teacher - Amie-lee Harris





Lauren Schwerdt

Middle School Coordinator

Creating a team where teachers and students become a community of learners

would like to take this opportunity to introduce myself to the Central Yorke School community where I will be leading the team that will drive the positive learning culture in our Middle School.

MIDDLE SCHOOL PHILOSOPHY

The Middle School philosophy starts by combining traditional components of primary and secondary school and incorporating them into new practice that acknowledges and caters to the unique developmental stages of adolescents.

The Middle School approach allows younger students to become familiar with the structure of secondary school whilst still engaging in hands-on teaching and learning. Its biggest benefit though is in creating a team where teachers and students can truly become a passionate community of learners.

MIDDLE SCHOOL STAFF.

Our 2023 Middle School team members each have their own passions and expertise which should prove perfect for providing a high-quality learning program with an individualised approach.



Year 6/7
Neve Smart



Year 7/8
Charlotte Nixon



Year 9
Betina Davies
Lauren Schwerdt

At any stage should you have any questions or concerns, please do not hesitate to contact me.

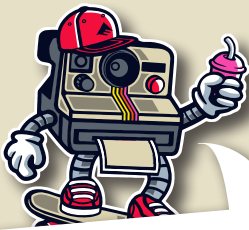
I am really excited about the year ahead and cannot wait to see the learning and achievements from our students. Certainly the positive vibe in the secondary wing suggests we have a great group of students who are excited about being back and are ready to learn!

Kind Regards,

Lauren Schwerdt

.....

LaurenSchwerdt903@schools.sa.edu.au



Week 1 Middle School Round Up



1



2



3



4



5



6

- 1. 6/7's in the newly decorated Science Lab.
- 2. Year 9's penning the sheep.
- 3. Year 9's drenching the sheep.
- 4. 6/7's first lesson for 2023.
- 5. Middle School staff
- 6. Year 9 students first day back.



Shayla Vince

Coordinator: Senior School

Welcome back to all our senior students. I hope you've all had a lovely break! It is exciting to see the SACE patterns coming together as we begin to delve into the learning within our subjects for this Semester.

The SACE (see opposite) is designed to allow students to choose the subjects that suit their interests, skills and career goals. I look forward to seeing students gain or extend their knowledge and skills to help them in their future study and employment as we have a range of exciting subjects on offer with passionate teachers in each area.

I am working every Wednesday and Friday this Semester. Should you have any questions or concerns please contact either myself or our Deputy Principal Finn Galindo.

Shayla Vince

.....

ShaylaVince 850@schools.sa.edu.au

SENIOR SCHOOL HOME CLASS TEACHERS

YEAR 10 HOMECLASS: BRITTANY LYNCH

- Identities and Futures
- Design
- Wellbeing



YEAR 11 HOMECLASS: CHELSEY ARTHUR

- SAASTA
- Nutrition
- Biology



YEAR 12 HOMECLASS: LUKE TRENORDEN

- General Maths
- Essential Maths
- Mathematics
- PE





Your child's SACE journey

The SACE is flexible and students' schedules may differ depending on their school. To complete the qualification, your child will need to attain **200 credits** from a selection of Stage 1 and Stage 2 subjects. A 10-credit subject is usually one semester of study, and a 20-credit subject is usually over two semesters.

COMPULSORY SUBJECTS

50 credits

- The Personal Learning Plan (PLP) (10 credits)
- Literacy requirement (20 credits) demonstrated from a range of English subjects at Stage 1 or Stage 2
- Numeracy requirement (10 credits) demonstrated from a range of Mathematics subjects at Stage 1 or Stage 2
- The Research Project (10 credits)



STUDENT SELECTED SUBJECTS

90 credits

Your child chooses and successfully completes a selection of Stage 1 and Stage 2 subjects, recognised VET courses, or community learning.



60 credits

Your child chooses and successfully completes a selection of Stage 2 or VET subjects worth at least 60 credits in total.

Stage 2 subjects are externally assessed by the SACE Board of South Australia.

The SACE is flexible and students' schedules may differ depending on their school. The majority of students in South Australia will start their journey with the **Personal Learning Plan in Year 10**, their selection of **Stage 1 subjects in Year 11** (including the compulsory Maths and English choices), and their selection of **Stage 2 subjects in Year 12** (including the Research Project). To view all subjects offered by SACE visit sace.sa.edu.au

EXAMPLE OF ACHIEVING A MINIMUM OF 200 CREDITS

50 credits - compulsory

Personal Learning Plan (10 credits)

Stage 1 General Mathematics (10 credits – one semester)

Stage 1 Essential English (20 credits)

Stage 2 Research Project (10 credits)

Min. 90 credits

Stage 1 Biology (20 credits)

Stage 1 Italian continuers (20 credits)

Stage 1 Food and Hospitality (20 credits)

Stage 2 Food and Hospitality (20 credits)

Stage 1 VET: Certificate II in Food Processing (min. 40 credits)

Min. 60 credits

Stage 2 Biology (20 credits)

Stage 2 Italian continuers (20 credits)

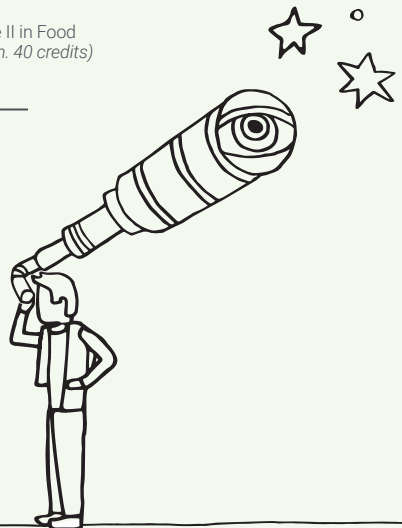
Stage 2 Essential English (20 credits)

To view all subjects offered in the SACE visit sace.sa.edu.au

How it has changed

The SACE has evolved to provide your child with **more flexibility** to choose subjects that reflect their interests, skills, and career goals, using a combination of SACE subjects, vocational education and training (VET), community learning, university, and TAFE studies.

SACE subjects are made up of investigations, performances, and other assessment tasks to demonstrate students' skills, knowledge, and personal capabilities throughout the year. Some subjects will have an end-of-year exam **worth a maximum of 30%** of the overall grade.





community connections

DI MORGAN: MAITLAND CITIZEN OF THE YEAR

Congratulations to Di Morgan on her Maitland Citizen of the Year Award.

Di has been active within our school community for many years supporting our Performing Arts program, mentoring young percussion students and playing in the Concert Band.

Di's award recognised her volunteer work in the Maitland community..

Thank you Di for all your contributions over the past years and your continuing support of our school. Thanks also to the Maitland & District Progress Association for the organisation and sponsorship of the annual awards.



SOPHIE BAKER - STOCK JOURNAL

Year 12 student Sophie Baker was interviewed by the Stock Journal after receiving her 2022 SACE results.

"I couldn't believe it, and was really happy that my teacher and all our efforts could be reflected in my grade," she told reporter Liam Wormwald.

Commenting on her Year 12 Agriculture course she said :It's been a huge passion of mine for years now and I really love our school's ag program".

Sophie is currently working at Grainflow in Maitland and will be relocating to Adelaide to study at Flinders University.

SYP COMBINED SCHOOLS YEAR 12 STUDY RETREAT

Students from Year 12 combined with the other Southern Yorke Peninsula Partnership Schools of Minlaton, Yorketown and Ardrossan, for the first combined SYP Year 12 retreat in Port Vincent.

The retreat brought together year 12 students from across our SYP partnership to collaborate together and be provided with the skills, strategies and resources to achieve success in this, their final year at school.

The retreat focused on included study skills, work/ life balance, maintaining a healthy lifestyle, learning and study expectations, and collaboration/ building relationships with students across the sites.

One major highlight was listening and engaging with globally recognised motivational speaker Craig Harper.

This was a fantastic opportunity to start the 2023 year. We look forward to continue working alongside the partnership schools to provide positive learning experiences for our students in the near future.



school & community information.

RELIEF BUS DRIVERS WANTED

The school is recruiting for casual/relief bus drivers for our school runs. Please call the school on 8832 2613 for more information.

SCHOOL MAGAZINE 2022

The 2022 School Magazine is a wonderful celebration of a year of learning, adventure, excitement and achievement by our K-12 students across their four campuses. There are reports from our school leaders and subject teachers, a photographic calendar section of all the year's highlights and class pages.

The 2022 School Magazine is just \$30 and is available through the Student Services office at school. Payment can also be made through the school Qkr app.



Central Yorke School invites all families to our Annual

MEET THE TEACHER EVENINGS

Maitland Campus

5.30pm Tuesday Feb 14

Point Pearce Campus

4.30pm Wednesday Feb 15

This is an opportunity for parents/caregivers to meet the Leadership team, teachers and most importantly your child's Care Group teachers. Care Group teachers will be providing important information and work with families to support their children to be successful at school.





Week 5



Week 10



Week 7



Week 2

The CYS canteen specials (yum!) will run each week throughout Term 1. Each special will run for the entire week and can be ordered through the Qkr! App.

- Week 2:** yiros - lamb, chicken **\$7**
Combination **\$8**
- Week 3:** fruit salad and ice cream **\$6**
- Week 4:** platter boxes **\$7**
- Week 5:** savoury pockets
Option 1- chicken, avocado, sundried tomato, cheese **\$8**
Option 2- salami, cheese, ham, tomato paste, pineapple **\$6**
- Week 6:** pizza - Hawaiian, bbq chicken, supreme **\$4**
- Week 7:** fettuccine carbonara **\$7**
- Week 8:** home made quiche and salad **\$7**
- Week 9:** deconstructed taco **\$6**
with mince meat, lettuce, tomato & sour cream
- Week 10:** spaghetti bolognaise **\$6**



Canteen orders can be made online through the Qkr! app or with a lunch order bag at school.

January Birthdays

5 years old

Adelyn (Rec)
Logan (Rec)
Amarli (Rec)
Alyssa (R/1A)

10 years old

Oliver (4/5A)
11 years old
Harrison (6/7A)

14 years old

Rushton (9A)
Isabelle (7/8A)
Summer (9A)

8 years old

Amitiel (2/3A)
Eva (2/3A)

12 years old

Caitlyn (7/8A)

15 years old

Annabel (10A)

9 years old

Hannah (4/5A)

13 years old

Travis (7/8A)
Rovina (7/8A)
Owen (7/8A)
Anthony (7/8A)

17 years old

Billy (12A)
Kira (12A)
Rhyan (12A)



Week 1 House Points

A big start to 2023 with Mr Rennie's class securing a convincing lead for the Eagles.



447



324



STYMIE



Your intuition is never wrong. Listen to what your body tells you about personal safety.



From the archives...

2018 | 5 years ago

2013 | 10 years ago

2008 | 15 years ago

2003 | 20 years ago

1998 | 25 years ago

1993 | 30 years ago

1988 | 35 years ago

1983 | 40 years ago

1978 | 45 years ago

1973 | 50 years ago

1968 | 55 years ago

1963 | 60 years ago

1958 | 65 years ago

1953 | 70 years ago

1948 | 75 years ago

1943 | 80 years ago

1938 | 85 years ago

1933 | 90 years ago

1928 | 95 years ago

1923 | 100 years ago

1918 | 105 years ago

1913 | 110 years ago

1908 | 115 years ago

1903 | 120 years ago

1898 | 125 years ago

1893 | 130 years ago

1888 | 135 years ago

1883 | 140 years ago

1878 | 145 years ago



↑ First day back - Jan 29, 2013



↑ Middle School Assembly - Feb 7, 2003



↑ Maitland Area School Fife Band - 1919

Term 1 Calendar

JANUARY

WEEK 1

30 First day back to school

FEBRUARY

3 Year 12 study retreat.

WEEK 2

Canteen Special: yiros (lamb or chicken)

One Plan: Parent Surveys go home

WEEK 3

Canteen Special: fruit salad and ice cream

14 Maitland Campus 'Meet the Teacher' (5.30pm)

15 YP Concert Band rehearsals begin (3.30pm)

15 Point Pearce Campus 'Meet the Teacher' (4.30pm)

15 Governing Council AGM (6.30pm)

WEEK 4

Canteen Special: platter boxes

DayPlan: Parent Portal opens (TBC)

20 Immunisations

22 YP Concert Band (3.30pm)

WEEK 5

Canteen Special: savoury pockets

MARCH

1 YP Concert Band (3.30pm)

WEEK 6

Canteen Special: pizza

8 YP Concert Band rehearsal

10 CYS Sports Day (3.30pm)

COLOUR CODES

Week

Whole school event

Holiday

Community events

WEEK 7

13 Adelaide Cup holiday

14 Pupil Free Day

Canteen Special: fettuccine carbonara

15 NAPLAN begins

15 YP Concert Band (3.30pm)

16-17 NAPLAN testing

17 Maitland Show

WEEK 8

Canteen Special: home made quiche & salad

20-24 NAPLAN testing

22 YP Concert Band (3.30pm)

WEEK 9

Canteen Special: deconstructed Taco

27 NAPLAN testing

27 Secondary Inetrschool Sports Day (CYS hosting)

28 Primary Interschool Sports Day (CYS hosting)

29 YP Concert Band (3.30pm)

APRIL

WEEK 10

Canteen Special: spaghetti bolognaise

3 YP Athletics Day at Santos

5 YP Concert Band (3.30pm)

7 Good Friday holiday

WEEK 11

10 Easter Monday holiday

12 School photo day

12 YP Concert Band (3.30pm)

14 Last day of term

15 - 30 Holidays

25 ANZAC Day - Dawn Service