

Central



1

CENTRAL YORKE SCHOOL NEWSLETTER
FEBRUARY | 2026



Government of South Australia
Department for Education

Central Yorke School

B-12 News & Information



Rob Jeffries

Principal

robert.jeffries150

@schools.as.edu.au

Acknowledgement of Land

*"We acknowledge the
Narungga People as
the Traditional Owners
of this land and we pay
our respects to their
Elders past, present
and emerging."*

Junction Road, Maitland SA 5573



RESILIENCE · RELATIONSHIPS · RESPECT

P (08) 8832 2613

W centralyorkeschool.sa.edu.au

F facebook.com/CentralYorkeSchool

I would like to welcome you all to Central Yorke School and we look forward to working with your child.

Welcome back to the 2026 School Year

I would like to welcome all of our new families to their first few weeks at Central Yorke School and we have had a number of new students begin at the Maitland and Point Pearce campus.

It has been a fast start, with students and staff settling into new roles and routines. The buzz in all of the classes has been electric as new friendships and connections are formed.

Early Learning Centre

The Early Learning Centre has expanded its program this year across 5 days, with almost 40 new students and their families being welcomed to our school community.

I would like to welcome you all to Central Yorke School and we look forward to working with your child in the first and very important first steps into their schooling lives.

New Receptions

We also welcome our brand new receptions to their first few days at primary school. To all of those students and their families in Miss Caputo's, Miss Briggs' and Miss Fehring's class... a very warm welcome to you!

New Staff

We also have a number of new and returning staff members this year. They have been fit in seamlessly to our staff and are excited to get to know you and your children.

A special welcome to our new Secondary Assistant Principal Adele Kehler. Adele brings a wealth of experience and knowledge to our school and we look forward to working with her this year.

Special programs

The Year 4-6 'Learning On Country' program starts this week with a year of exciting excursions, special guests and learning activities.

In the senior school the senior 'Electro Tech' program commenced this week with a dozen students visiting from other schools.

SAASTA and SAASTA Connect also commenced this week with 60 First Nations students on our campus for an exciting start to their year.

As always, we have a very busy Term 1 ahead and I look forward to catching up with all our families soon if I haven't already done so.

Regards,



Rob Jeffries | Principal



Creativity and Curiosity

The Centre of Learning at Central Yorke School

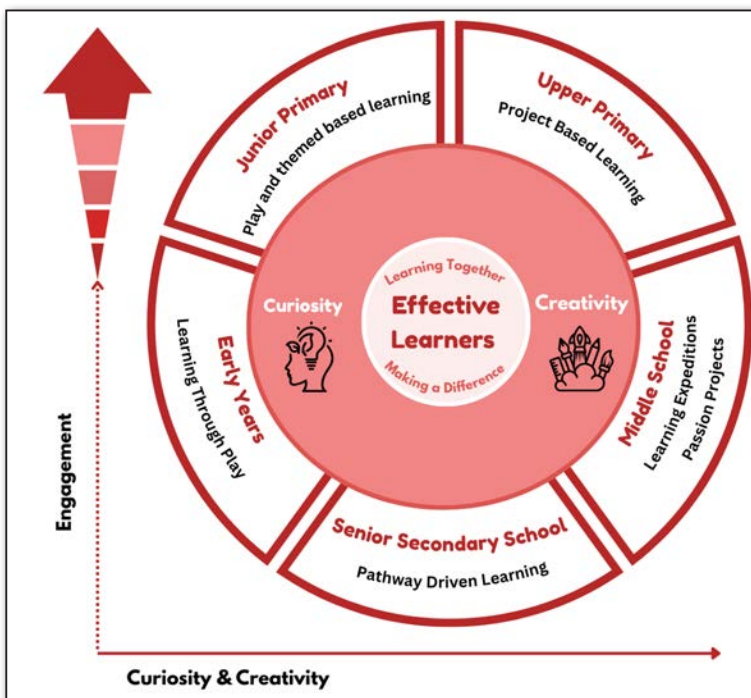
At Central Yorke School, creativity and curiosity sit at the core of everything that we do. We believe that every child is a learner, who loves to ask questions, explore ideas, and make sense of the world around them. By nurturing curiosity, we encourage students to think, wonder and engage in their learning.

Creativity plays an equally important role in the learning journey. Through creative thinking, students are given opportunities to problem solve, experiment, and express their understanding in a variety of ways. Whether in the classroom, our amazing outdoor spaces or through collaboration with others, our learners are supported to take risks, learn from mistakes and build

confidence in their own ideas. This helps develop resilient and independent learners at school and beyond.

By placing creativity and curiosity at the core of learning, Central Yorke School fosters a supportive and engaging environment where students feel motivated and empowered. We are proud to partner with families in nurturing lifelong learners who are confident, capable, and excited about their learning journey.

This graphic outlines Central Yorke School's 2025 Learning Plan and shows how curiosity and creativity are intentionally designed into learning across all year levels, with engagement as the outcome.



The Big idea

At the centre is the goal of developing Effective Learners who are learning together and making a difference. Curiosity and creativity alongside this because they drive engagement, confidence, and meaningful learning. As curiosity and creativity increase, so does student engagement.

LEARNING ACROSS THE YEARS

The circular design shows how learning evolves as students grow, while staying anchored in the same core values:

■ Early Years: Learning Through Play
Students develop curiosity by exploring, questioning, and experimenting through play-based learning.

■ JP: Play & Theme-Based Learning
Learning is organised around themes that connect ideas across subjects, encouraging imagination, inquiry, and deeper understanding.

■ UP: Project-Based Learning
Students engage in longer-term projects that require collaboration, problem-solving, and creative thinking to address real-world questions.

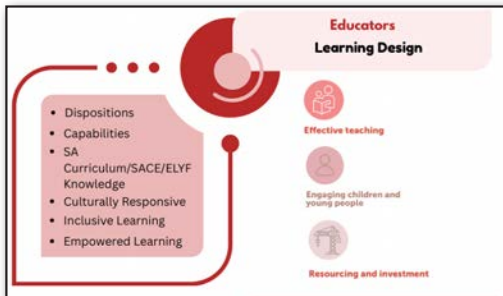
■ Middle School: Learning Expeditions & Passion Projects
Learning becomes more authentic and student-driven, with opportunities to explore interests, investigate real issues, and apply learning in meaningful contexts.

■ Senior Sec': Pathway-Driven Learning
Students follow personalised pathways aligned to their goals, strengths, and future aspirations, building independence and ownership of learning.

How learning is supported

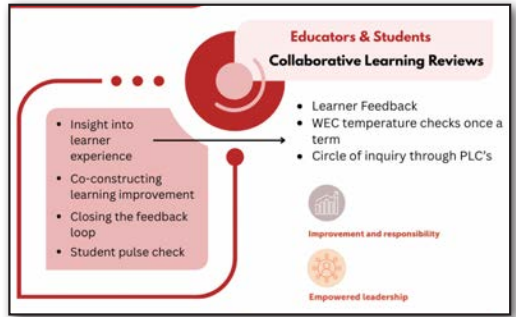
The right-hand side shows how the whole community supports this learning model:

EDUCATORS: LEARNING DESIGN



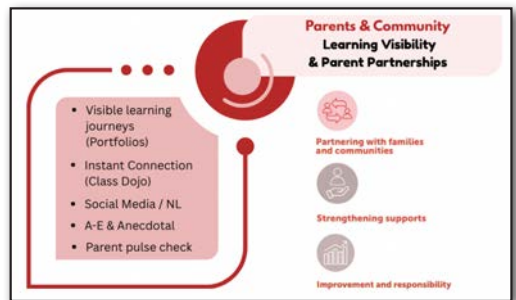
Teachers design learning that is inclusive, culturally responsive, aligned with curriculum, and focused on building student capabilities and dispositions.

EDUCATORS & STUDENTS: COLLABORATIVE LEARNING REVIEWS



Feedback, reflection, and review cycles ensure learning continues to improve. Student voice is central, and feedback loops are intentionally closed.

PARENTS & COMMUNITY: VISIBILITY AND PARTNERSHIPS



Learning is made visible through portfolios, class communication, newsletters, and social media. Strong partnerships with families support student success.

We look forward to working alongside of you to help all students become successful, life long learners.

Secondary Campus

Year 7-12 News & Information



Adele Kehler

Assistant Principal
(Secondary)

adele.kehler654
@schools.sa.edu.au

As educators, there is something truly rewarding about watching students grow and develop across their entire schooling journey

I am delighted to be joining Central Yorke School as the new Assistant Principal for the secondary years and have had a wonderful start. From day one, I have been made to feel incredibly welcome by both staff and students.

R-12 highlight

One of the highlights so far has been spending time walking around the school and soaking up the positive vibe. Our students have some of the best manners and friendliest faces, and it has been a pleasure getting to know them. I have also really enjoyed working alongside the secondary staff as we plan for the year ahead and seeing the exciting learning opportunities they have ready to go.

*A respectful school
is built by
YOU.*





It has been a few years since I have worked in an area school, and I had forgotten just how special it is to see students from Reception right through to Year 12 learning and connecting. As educators, there is something truly rewarding about watching students grow and develop across their entire schooling journey and being able to follow that journey all the way through.

Dedicated staff

I have been particularly impressed by the dedication of our staff and the strong support they provide to their learners. It has been a busy start for our senior students as we ensure their subjects are aligned to successfully complete their SACE, while also balancing VET courses and SAASTA commitments. Our middle school students



have also started the year well, setting expectations and engaging with the learning ahead.

SAASTA and VET courses have begun this week, providing students with valuable opportunities to explore future pathways and pursue their interests and passions.

Kind Regards,

Adele Kehler

.....

Adele Kehler

Assistant
Principal (Secondary)



Primary Campus

R-6 News & Information



Chelsea Schmidt

Assistant Principal
(Primary)

chelsea.koch517
@schools.sa.edu.au

It has been especially lovely to see our new Reception students and students new to our school settle in with confidence and enthusiasm.

Welcome Breakfast

We enjoyed a wonderful start to the 2026 school year, beginning with our Welcome Morning Breakfast. Despite the scorching temperatures, it was fantastic to see so many families, students, and staff come together to share breakfast and connect as we launched the year ahead. The morning provided a great opportunity to hear about summer holidays, reconnect with familiar faces, and share a glimpse of what 2026 will bring.

Thank you!

A huge thank you to our classroom teachers and SSOs who spent considerable time preparing learning spaces, thoughtfully themed and beautifully set up to welcome students back.





It has been especially lovely to see our new Reception students and students new to our school settle in with confidence and enthusiasm. The year has started smoothly, with a calm and positive atmosphere across the site, setting a strong foundation for the year ahead.

SRC Nominations

It's been fantastic to see so many students put themselves forward and nominate for the SRC class reps and our Primary Head Prefects.

Student leadership plays an important role in building voice, responsibility and connection within our school and it's encouraging to see students stepping up with confidence and a willingness to give it a go.



Shoe Box Shout Out

One of our Primary classes will be creating dioramas in the coming weeks and we are seeking donations of empty shoe boxes. If you have any shoe boxes at home that you are able to spare, we would greatly appreciate them.

Please bring any donations to the front office or send them along with your child, who can drop them off at the front office.

Photo Day Reminder

Photo Day notes have gone home with students with a copy up on our Facebook page. Online ordering is available up until Wednesday, February 25th.

Kind Regards,

Chelsea Schmidt

Chelsea Schmidt

**Assistant
Principal (Primary)**

Character Strengths

Character strengths are ways of thinking, feeling, and behaving that come naturally and easily to a person and that enable high functioning and performance.” (Linley, 2006)

As a whole school, we are focusing on building strong **character strengths**.

What are Character Strengths?

Character strengths are the positive qualities that shape how we think, feel and act. They help us do what is right for ourselves and for others.

These strengths are the building blocks of character, wellbeing and human goodness, and underpin virtues such as kindness, perseverance and integrity in everyday life.

How it will work:

Every fortnight, we will focus on a specific character strength. Teachers will be on the lookout for one student in each class who is demonstrating that strength in their learning, behaviour, and interactions with others.

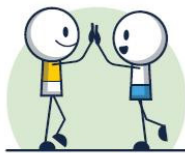
Each selected student will:

- Receive a certificate of recognition
- Be acknowledged at our fortnightly Friday presentation
- Be celebrated on our Facebook page

Keep an eye out for 'Fame Fridays' on Facebook on even weeks!

Why this matters:

Celebrating character strengths helps build confidence, resilience and positive relationships. It reinforces positive



HUMANITY

capacity to love & be loved, kindness, social intelligence



TEMPERANCE

forgiveness, modesty, prudence, self-control



COURAGE

bravery, persistence, honesty, zest



WISDOM

creativity, curiosity, open-mindedness, love of learning, perspective



TRANSCENDENCE

appreciation of beauty & excellence, gratitude, hope, humour & playfulness, spirituality



JUSTICE

teamwork, fairness, leadership

behaviour, encourages students to recognise their own strengths, and creates a school culture where effort, kindness and integrity are valued and noticed.

At Central Yorke, we believe learning is about more than academics – it's about growing good humans too.

Bravery



Our first character strength is Bravery: showing courage, having a go, and speaking up even when something feels challenging.

With SRC nominations and speeches occurring alongside students bravely navigating a new school year, we have already seen so many examples of this in action.

Moving forward

We are excited to see where this learning takes us and to see our students continue to grow as they apply the many character strengths that will help them to navigate challenges, build positive relationships and thrive at school.



WHAT IS the Character Strengths Program?

Our school's Character Strengths program, developed in partnership with the Institute of Positive Education, helps students recognise and build the positive qualities that support learning, wellbeing and relationships.



RESEARCH BASED

Based on research from organisations such as the VIA Institute on Character, the program focuses on strengths like kindness, perseverance, curiosity, teamwork and gratitude.

Every child has these strengths. The program helps them learn how to use them confidently in everyday life.

DEVELOPING AWARENESS

Through classroom activities and discussions, students develop greater self awareness, resilience and empathy.

They learn to approach challenges positively, manage emotions and build strong connections with others.

FOR FAMILIES

For families, this shared language of strengths supports conversations at home about effort, behaviour and personal growth. By encouraging children to notice and use their strengths, the program helps them flourish both academically and personally.



← Visit the Institute for Positive Education at instituteofpositiveeducation.com

CHARACTER STRENGTH **FAME FRIDAY**

| Character Strength of the Fortnight: **Bravery**

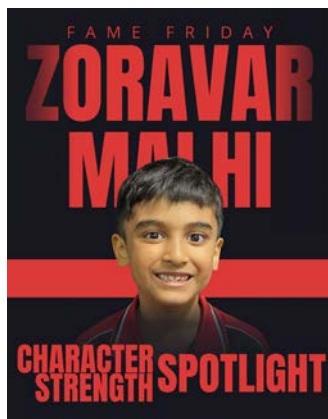
Each fortnight on Fame Friday, we celebrate students who have been recognised by their teachers for consistently showing our character strength of the fortnight. These students are our famous faces — chosen for the positive ways they think, act, and support others at Central Yorke School. This fortnight, our focus has been on bravery

What does bravery look like?



Bravery can look like having a go, stepping outside your comfort zone, trying something new, speaking up, or doing the right thing even when it feels challenging.

The featured students have shown outstanding bravery in their learning, friendships, and everyday choices.



Well done to our Fame Friday stars — we are so proud of you! Keep being brave and believing in yourselves.



Learning on Narungga Country

Friday, 6 February

Friday, February 6 was the first day of our Learning on Narungga Country program for 2026

Our Year 3–6 First Nations students learnt about David Unaipon, a Ngarrindjeri man who appears on the \$50 note. He was a scientist and writer, and an important spokesperson for Aboriginal people.

Drawing on the way that boomerangs spin through the air, Unaipon developed plans for a flying machine that used spinning blades, allowing it to rise straight up — much like the modern-day helicopter.

The students were able to recreate their own helicopters using those same principles.

Our R–2 students had a Narungga language lesson with Aunty Shara and made some fantastic webs for Incy Wincy Wagu.

The cultural learning continued in the afternoon with a lesson in cultural dance run by Nikki Ashby. Nikki is currently running Wayaga performing arts workshops, held every Saturday at the Port Victoria Town Hall.



Point Pearce Campus

News & Information



Kath Magarey

Head of Campus
(Point Pearce)

kath.magarey602@schools.sa.edu.au

We look forward to welcoming back our Narungga students from the Maitland campus who will be participating in our Learning on Country program.

We have had a great start to the year here at the Point Pearce Campus.

We have welcomed six new students to our newly formed Yr.3-6 class, five of whom who are ex students of our campus and all very excited to be back.

Staff Changes

We have also welcomed our new Reception to Year 2 teacher Kelly Davis who has nearly two decades of experience working on Aboriginal communities here and in the Northern Territory. Kelly brings a wealth of experience to our campus and we are so pleased to have her join our staff.



Linda Cooper has now moved into the Year 3-6 teacher role with Cathy Redding teaching one day a week and Kerry Richardson continues as our preschool teacher.

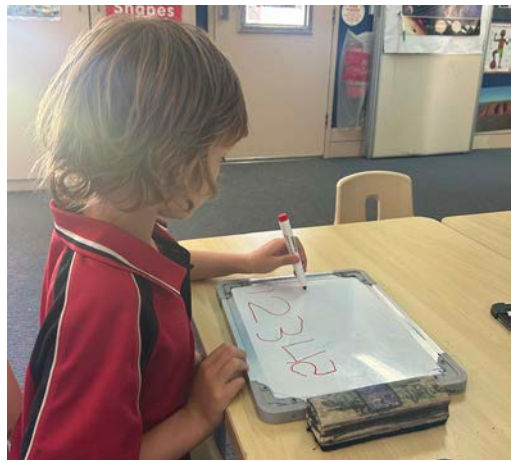
Classroom Support

We are lucky to have Jacki Luciani supporting our Special Ed program and Shara Rigney is establishing our Narungga Language program which is something that is a welcome addition to our Campus. Kuliah Power is continuing in her classroom support role and Belinda Chapman is leading our Occasional Care program. This year we are also lucky enough to have the admin and WHS support of Jodie Ames 4 days a week.

Learning On Country

We look forward to welcoming back our Narungga students from the Maitland campus Year 4-6 class who will be participating in our Learning on Country program every Friday from 11.00 am.

After a hot start to the term, we are really getting in to the swing of things with one of the highlights so far being the cooking classes run by Kuliah. Check out all the photos on page 15



Kath Magarey

Kath Magarey

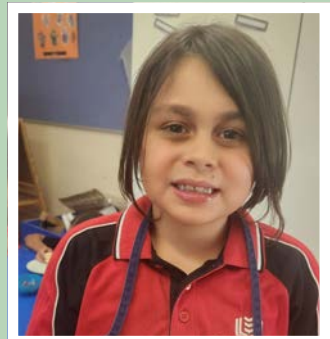
Head of Campus
(Point Pearce)

Wayaga
(Shooting star)
Performing arts

First Nations training program 2026
Saturdays
@ Port Victoria Town Hall, Guuranda

Jnr Dance (8-10yrs) - 11.30am-12.15pm
Theatre (11-13yrs) - 12.20pm-1pm
(refreshments.provided)
Contemporary (13-17yrs) - 1.50pm-2.30pm
Cultural (8-17yrs) - 2.45pm-3.25pm

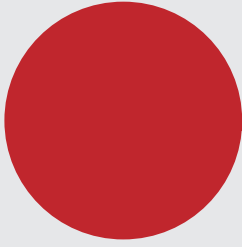
Email to register: Wayagaproductions@yahoo.com
Contact for more info on: 0422 307 297





Early Learning Centre

News & Information



Anna Allen

Head of Early Years

anna.allen814
@schools.sa.edu.au

It has been especially lovely to see our new Reception students and students new to our school settle in with confidence and enthusiasm.

It is with great excitement that we welcome our Central Yorke Early Learning Centre families back for the beginning of Term 1, 2026.

Universal three-year-old preschool

This year marks a significant milestone as our Preschool and Rural Care programs commence for the year, and we are proud to be among the first sites in South Australia to roll out universal three-year-old preschool.

Thanks to this initiative, we have increased our preschool days to full time Monday to Friday, with two groups of children attending across the week.

This provides more learning opportunities and continuity of care for our youngest learners, supporting their growth and development in these important early years.



CENTRAL YORKE PLAYGROUP
FRIDAYS 9:30 - 11AM
Welcome back to Playgroup at Central Yorke School, with Corley! Join us every Friday morning during the school term in our new location, in the school gym (Rec centre). Children from birth to preschool, along with their families are invited to attend.

STARTS FEBRUARY 6th 2026

WHAT TO BRING:

- A piece of fruit
- A drink bottle
- A hat
- A gold coin donation

Anna.Allen814@schools.sa.edu.au
Carley.Dutschke857@schools.edu.au

Ph: 08 8832 2915
Junction Road Maitland SA 5573



New Staff

We are also delighted to welcome two new staff members to our service.

Karen Spiers joins us as Preschool Teacher on Tuesdays, bringing a wealth of experience and enthusiasm to our preschool program. In Rural Care, we warmly welcome Zaiya Cross, who will be supporting children and families on Thursdays. Both Karen and Zaiya come with impressive backgrounds in early childhood education, and we are fortunate to have them join our dedicated team. In addition, Playgroup with Carley will now take place in the Central Yorke school gym every Friday morning from 9:15am until 10:45am. We look forward to seeing many new and returning families join us for these fun and engaging sessions.

We are looking forward to a wonderful year of learning through play at Central Yorke Early Learning Centre. Here's to an inspiring start to 2026!

Anna Allen

.....

Anna Allen

Head of Early Years

WHAT IS 3-year-old preschool?

3-year-old preschool is a play-based early learning program, led by a qualified early childhood teacher, working alongside early childhood educators, to create a nurturing and engaging learning environment.

A typical day might include:

- fun, purposeful activities that encourage social skills, exploration, and curiosity
- opportunities for child-led discovery that helps children become confident communicators and involved learners
- a safe and supportive environment for developing self-identity and emotional resilience
- outdoor play to support health, wellbeing and exploration
- celebrating Aboriginal and other cultures.

WHY HAS THIS PROGRAM BEEN IMPLEMENTED?

The Royal Commission into Early Childhood Education and Care found that 2 years of preschool are more beneficial than one. Children who attend 2 years of quality preschool show stronger cognitive, social and emotional development, and are better prepared for school.





Garden to Plate

Term 1, Week 1

This week, all the primary classes took part in activities focused on table manners, setting a table and serviette folding with lots of guidance from Mrs Norton and Mrs L.

The staff have also introduced a fun new Term 1 theme, starting each session with a science demonstration.

This week's highlight was launching Alka-Seltzer rockets!





HASS



Why teach HASS?

The Humanities and Social Sciences (HASS) learning area plays an important role in helping students understand their world, their community and their place within it. From Reception to Year 10, HASS develops curiosity, critical thinking and responsible citizenship.

What topics are taught?

■ Years R-2

In the early years (Reception to Year 2), students begin by exploring their own lives, families and local community. They learn about places, traditions, simple maps and the importance of working together and showing respect for others.

■ Years 3-6

In the primary years (Years 3 to 6), learning expands to include Australian history, geography, sustainability and early civics education. Students investigate how communities develop, how people use and care for environments, and how decisions are made in society. They learn to research, ask questions and share their ideas clearly.

■ Years 7-10

In the middle and secondary years (Years 7 to 10), students study subjects such as History, Geography, Civics and Citizenship, Economics and Business. They explore ancient and modern societies, global issues, environmental challenges and Australia's democratic systems. Students analyse sources, debate ideas and develop informed viewpoints.

Composite classes

In composite classes, where students from two year levels learn together, HASS topics are usually planned across a two year cycle so that students study all required curriculum content without unnecessary repetition.

Integrated topics

In some year levels, HASS is taught as part of an integrated learning theme that connects with English, Science, The Arts and Technologies.

This approach allows students to explore topics in greater depth, see links between subjects and apply their learning in meaningful, real world contexts. Integrated learning supports engagement, creativity

and deeper understanding by showing how knowledge and skills work together across the curriculum.

Important skills

Across all year levels, HASS encourages students to think independently, understand different perspectives and become active, informed members of their community. These skills support learning across the curriculum and help prepare students for future study, work and life beyond school.

Important skills include:

- **Critical thinking**
analysing information, questioning sources and forming informed opinions
- **Research skills**
locating, selecting and evaluating information from different sources
- **Communication**
presenting ideas clearly through speaking, writing and discussion
- **Problem solving**
exploring real world issues and considering possible solutions
- **Civic understanding**
learning how communities, governments and laws work
- **Cultural awareness**
understanding diverse cultures, histories and perspectives
- **Geographical skills**
reading maps, interpreting data and understanding environments
- **Historical inquiry**
investigating past events and using evidence to explain change
- **Financial literacy**
developing basic money and economic decision making skills
- **Collaboration**
working respectfully and effectively with others
- **Digital literacy**
using online tools safely to research and present information





I Wonder: Me and the World

This term, R/1 students will be learning about themselves, their families, and the places that are special to them.

They will explore what it means to belong, learn about our classroom and school community, and begin to understand how we care for people and places around us.



History

Ms Chivers' Year 3 class are looking into the importance of History and how it can help us to identify change, growth, and how it can help us learn from our mistakes.

One of the activities we have completed so far is looking into our favourite memories from the past and how those memories help shape our future.





Ocean Adventure

This Term, the year 2s are embarking on a cross-curricular Ocean Adventure. In HASS, they will cover knowledge and skills for geography and environmental stewardship.

Activities will include using maps to follow the paths of the ocean animals, exploring different marine habitats and learning how to care for the environment.





Ancient Egypt

Year 7/8 students are exploring the fascinating world of Ancient Egypt, one of the most influential civilisations in history.

Students are investigating daily life along the Nile River, including farming, trade, religion and social structures. They are learning about powerful pharaohs, impressive engineering achievements such as the pyramids, and the development of writing through hieroglyphs.

Through hands-on activities, research projects and source analysis, students are developing historical thinking skills while discovering how ancient beliefs, technologies and traditions continue to influence the modern world.

This unit encourages curiosity, critical thinking and creativity, while building strong foundations in historical inquiry and understanding.





| 9/10 HASS

World War I



In 9/10 HASS we are focusing on WW1.

Students will begin by understanding the reasons for the causation of the war, the alliances formed before/ through the war, specific battles, trench warfare, and many other important aspects throughout the war.

Students can be seen here completing their pre-assessment about WW1 which allows students to share any previous understandings they have of the war to then be built upon further throughout the unit.





Maitland Caring for women from ocean to outback

BreastScreen SA's Mobile Screening Unit is visiting Maitland from early January to early February 2026

We're inviting women aged over 40, especially 50 to 74 years, to come along for their free breast screen

- It's FREE and quick - it takes just 15 minutes
- You can make a booking with a friend, family member or group
- It's the best way of detecting breast cancer early (before symptoms start to show), giving you a greater chance of successful treatment

Book online at www.breastscreen.sa.gov.au or call 13 20 50

You'll find us behind the Maitland Hospital Robert Street, Maitland

Book now! Scan QR code to book online now or call 13 20 50



Breast Screen SA Government of South Australia

www.breastscreen.sa.gov.au

MAITLAND CRICKET CLUB



2026 Come & Try CRICKET (AGES 5 TO 8)

MAITLAND TOWN OVAL
FEB 12TH, 19TH & 26TH
3:15PM TO 4PM

\$5 PER SESSION
PAY CASH ON THE DAY

TO EXPRESS YOUR INTEREST PLEASE CONTACT CHARMAIN KAKOSCHKE
0439 006 734



GOOD NEWS

Disability SA
NEW
2026 AVAILABILITY!

Developmental Educators and Functional Capacity Assessments

DE's available in limited capacity for in school or home therapy

What is a Developmental Educator (DE)?

DE's are allied health therapists that support people to build their functional capacity, level of independence and social inclusion.

This may include skill building in:

- Social and emotional intelligence
- Resilience and coping strategies
- Social communication
- Sensory awareness

DE's also provide services in:

- Administering functional capacity and sensory profile assessments
- Advocacy in schools

Enquire now:
 PH: 8568 5107
 0438 570 909
admin@disabilitysa.com.au
www.disabilitysa.com.au

YP SOCCER ASSOCIATION INVITES YOU TO

SOCCER COME & TRY



If you are turning 5 in 2026 up to players turning 17 in 2026 you are invited to come and try soccer Sunday 1st and 8th March 2026
 Cnr Drain road and Port Road, Kadina.
 10 am start both days

Join Us!

For more information follow us on Facebook - YP Soccer. Message the page or contact -

President Rick - 0408 805 482
 Secretary Amy - 0447 231 083
ypsoccerassociation@gmail.com



Why MyTime?

MyTime is for parents and carers of a child with a disability, chronic medical condition or other additional needs including developmental delay.

Unwind and share experiences with others who understand

FIND US AT:
Kadina Uniting Church Hall
 Thursdays 9:30am – 11:30am
 6 sessions per school term
 (dates on next page)

CONTACT:
 Facilitator: 0466 427 633
 Email: Health.WCHNMyTime@sa.gov.au
 Website Enquiry: mytime.net.au





mytime.net.au


CALLING ALL AUTHORS

Year 9/10 students at Central Yorke are diving into the world of short stories this Term 1.



We need an author to inspire, share tips, and talk storytelling. In person or via Zoom – your choice!
 When: End Feb / Early Mar (TBC)
 Contact: Eden Caputo – eden.caputo718@schools.sa.edu.au
 Help spark the next generation of storytellers!


2026 CANTEEN



QKR Orders Close at 8:30am
 Lunch orders via the QKR app must be placed by 8:30am on the day.

Emergency Orders
 In urgent situations, families may phone the front office to place an order. These must be made before 10:00am sharp.

Pre-Paid Accounts
 Families may set up pre-paid accounts for students.




Wayaga

(Shooting star)
 Performing arts

First Nation training program 2026

Term 1 begins Sat 31st January
 @ Port Victoria Town Hall, Guuranda

Jnr Dance (8-10yrs) - 12pm-12.40pm
 Theatre (11-13yrs) - 1pm-1.40pm
 Contemporary (13-17yrs) - 1.50pm-2.30pm
 Cultural (8-17yrs) - 2.40pm-3.20pm

Email to register: Wayagaproductions@yahoo.com
 contact Youth Arts Manager for more info on: 0458 596 36

TERM 1 | 2026

FEBRUARY

| | | | |
|---------------|------------|--------------|------------------------|
| Week 4 | Mon | 16/17 | Year 7/8 Aquatics Camp |
| Week 5 | Mon | 23 | Long run & javelin |
| | Tue | 24 | Naplan Practice test |
| | Wed | 25 | School photos |
| | Thu | 26 | 800m & triple jump |
| | Fri | 27 | Leaders Induction |



MARCH

| | | | |
|----------------|------------|--------------|------------------------------------|
| Week 6 | Thu | 5 | Sports Day |
| | Fri | 6 | Pupil Free Day |
| Week 7 | Mon | 9 | Adelaide Cup Day |
| | Thu | 12-13 | Naplan |
| Week 8 | Mon | 16-20 | Naplan |
| | Tue | 17 | Endometriosis program (Years 9-11) |
| | Wed | 18 | Secondary Interschool (at CYS) |
| | Thu | 19 | Primary Interschool (at CYS) |
| | Fri | 20 | Junkyard Beats (Years 4-8) |
| Week 10 | Mon | 30 | Mile End athletics |



APRIL

| | | | |
|----------------|------------|----------------|------------------------------|
| Week 10 | Wed | 1 | Boys Footy (Years 5/6) |
| | Thu | 2 | World Autism Awareness lunch |
| | Fri | 3 | Good Friday |
| Week 11 | Mon | 6 | Easter Monday |
| | | 11 - 26 | School Holidays - Term 1 |
| | Sat | 25 | ANZAC Day |



TERM 2 | 2026

MAY

| | | | |
|---------------|------------|--------------|--------------------------|
| Week 1 | Fri | 1 | 5/6 Netball |
| Week 2 | Wed | 6 | 7/8 Basketball |
| | Fri | 8 | Mothers' Day Paint & Sip |
| Week 3 | Wed | 13 | YP Cross Country |
| Week 4 | Thu | 21/22 | SAASTA Power Cup |
| | Fri | 22 | 7-9 Netball |

